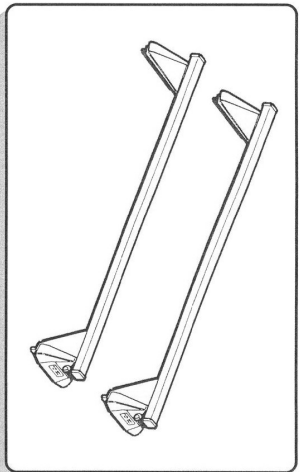
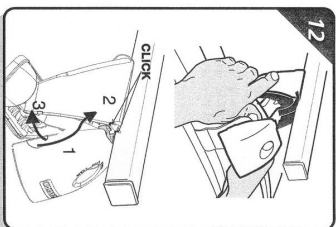
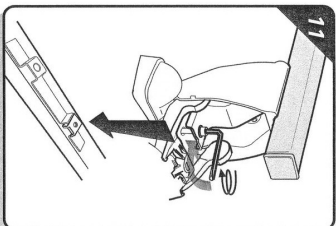
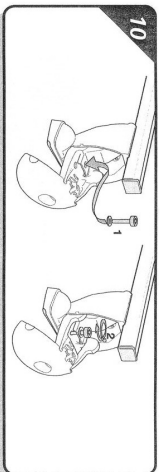
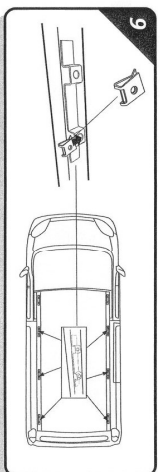
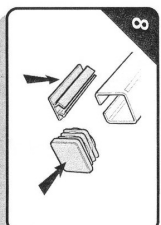
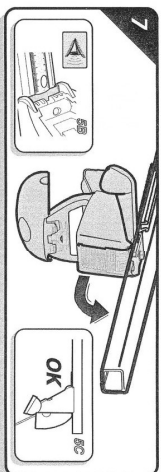
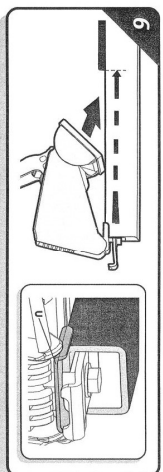
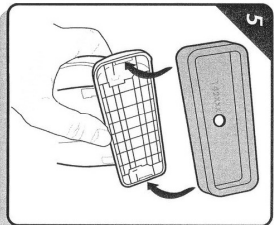
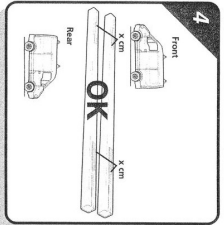
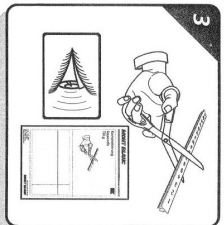
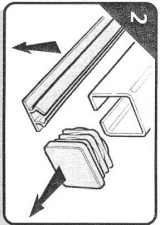
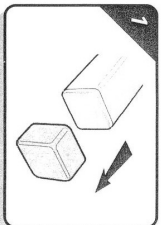
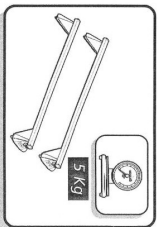
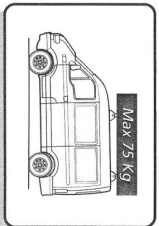


Load Carrier Fitting Instructions CVS13



Maximum load per vehicle 75Kg



Important

- The maximum recommended load stated on the front of this booklet must not be exceeded and the vehicle manufacturer's directions as to maximum recommended load must be observed (This can be found in the vehicle's owners handbook).
- Maximum load = The weight of the load carrier + the weight of the load.
- It is very important to ensure that loads are evenly distributed across the load bars and are safely secured using suitable fixing methods (e.g. strong webbing straps with buckles).
- Before driving and at regular intervals during your journey, check that all securing screws, clamping devices and fixings are correctly secured in accordance with these instructions.
- Neither the roof bars nor load must project beyond the maximum profile of the vehicle.
- Surf boards, timber and large flat objects may produce damaging aerodynamic forces to the vehicle, out of all proportion to their dead weight. We therefore recommend travelling at much reduced speed when carrying these articles. Where two or more packages are carried on similar items which may produce lifting forces they should not be carried side by side, but should be stacked one upon the other. They should each be secured independently to the front and rear of the vehicle using straps or methods that are capable of withstanding the lifting forces.
- The distance between front and rear load bars should be at least 700mm (load bars should be as stated by the vehicle manufacturer).

Special Recommendations

- Retain these instructions for future reference, ensure that any other users of the commercial bar system are familiar with their contents.
- If small heavy loads are being carried, load to one side of the bar, not the middle.
- Where specialised accessories are available, they should be used. (e.g. Pipe Clamps, etc).
- When using the bars, especially when carrying a load, the driving characteristics of your vehicle will change. Driving techniques should be altered to allow for this. Reduce speeds and allow longer braking distances.
- Ensure these roof bars are maintained and kept in good working order.
- Take care not to drive in low places such as garages or multi-storey car parks when carrying a high load.
- Do not put the car through an automatic car wash with the load carrier mounted.
- There is some risk that the paint under the foot rubbers may not match any fading of the vehicle paintwork. To avoid this, we recommend the wearing of the load bar feet and the removal of the foot rubbers. The feet should be removed at regular intervals to repeat this process.
- When fitted, the roof bars will effect your fuel economy, therefore please remove when not in use.

Optional Extra
Roof Bar locks available
Ask a member of staff for details

